

# Lakes Estate Renewal Project

Construction Phase Newsletter

Issue 18 | July 2025

**Welcome to the 18<sup>th</sup> edition of our monthly newsletter.**

## FIRST TENANTS MOVE INTO NEW HOMES

We are proud to mark a major milestone in the project as the first council tenants move into their new homes. This moment represents the culmination of months of dedicated work and close collaboration with Milton Keynes City Council and the local community.

The completion of the first six homes at Burnmoor Close is part of the initial phase of a transformative project that will deliver 183 high-quality, energy-efficient council homes, alongside a new park and commercial spaces. Construction began last year, and we are delighted to see the first families settling into homes built with care, precision, and a focus on long-term sustainability.

Cllr Ed Hume, Cabinet Member for Housing, visited the residents to welcome them and celebrate this important step forward. Over the coming months more families – including those living in Serpentine Court – will move into their new homes as they become available.



*"I'm so pleased with my new home; it will make a world of difference to me and my children. I'm really looking forward to getting settled in and starting this new chapter of our lives"*  
– Tenant, Danielle



This regeneration project has been shaped by years of meaningful engagement with the local community, whose input was instrumental in shaping the plans approved in 2022. Already, the area has seen the delivery of four new play parks and enhancements to shared courtyards – early signs of the positive change underway.

We look forward to continuing our work on the Lakes Estate and welcoming more families into homes that offer comfort, security, and a fresh start.





## MELFORT DRIVE

Internals progressing on all blocks, with block 1A nearing completion. Steel balconies installed to apartment block. Rear garden patios installed to all plots.



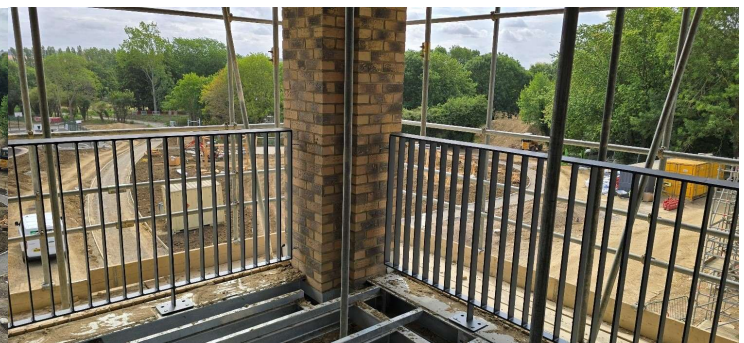
## DRAYTON ROAD

Southside of development entering finishing stages internally. Rear gardens complete to all plots. Mid site continuing with first fix electrical and plumbing, and northside close-up of walls.



## WARREN PARK / WINDERMERE DRIVE A1

Steel balconies are complete on both apartment blocks with the final precast roof planks being installed shortly, and internal works now progressing. In Warren Park works are continuing, with the pump track nearing completion, and play equipment has now started to be installed. The area is taking shape nicely.



## LAKES ESTATE RENEWAL FORUM MEETING

The next Lakes Estate Renewal Forum (LERF) meeting will take place on Thursday 4<sup>th</sup> September from 6:30pm at Spotlight, 114 Serpentine Court, Lakes Estate, Bletchley, MK2 3QR.

### CONTACT US

Resident Liaison Officer  
**Samantha Key** – 07391 185430 (Out of hours if urgent - 02895 071 034)  
[buildingsouthcustomerrelations@graham.co.uk](mailto:buildingsouthcustomerrelations@graham.co.uk)

Visit us at [graham.co.uk](http://graham.co.uk)  
Site Office, GRAHAM, Windermere Drive, Bletchley, MK2 3NS

### Microsite QR Code



SCAN ME

CONTRACTOR  
AND SUPPLIER  
PARTNER

CONSIDERATE  
CONSTRUCTORS  
SCHEME